

# SMD 303.825MHz SAW FILTER

AFS303.825E

APPLICATION: Automotive Electronics/Remote Control



5 x 5 x 1.5mm

## STANDARD SPECIFICATIONS:

CHARACTERISTICS	UNIT	MIN.	TYP.	MAX.
Center Frequency Fc	MHz	303.72	303.825	303.83
Bandwidth	kHz	500	-	800
Insertion Loss @ Passband	dB	-	1.7	3
Ripple @ Passband	dB	-	-	-
Relative Attenuation				
Fc - 21.4MHz	dB	40	50	-
Fc - 10.7MHz	dB	15	40	-
F where 10MHz < F < Fc -21.4MHz Fc+21.4MHz<F<1000MHz	dB	30	80	-
DC Voltage	V	10		
AC Voltage	V	10V(50Hz/60Hz)		
Source Power	dBm	0		
Operating Temperature	°C	-40°C to +85°C		
Storage Temperature	°C	-10-45°C to +85°C 10		
Frequency aging	ppm/yr		-	
External impedance	nH		62	
Series inductance L				
Series capacitance	pF		10	

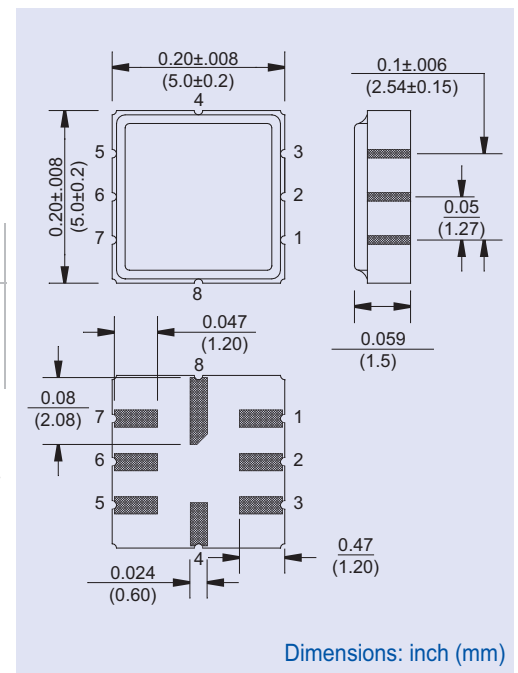
Electrostatic Sensitive Device. Handle with precaution.

## MARKING:

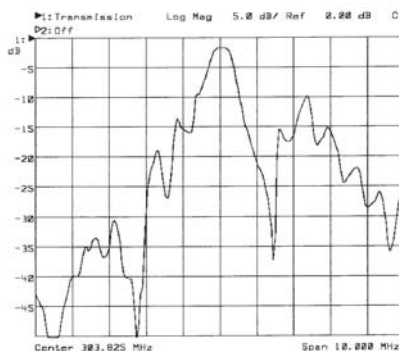
- 303.82 (303.825 Frequency in MHz)
- AF ZYX (ZY: Date code Z for month from A to L; Y for year, i.e. 4 for 2004 X: Traceability code)

PIN NO.	CONNECTIONS
1	Input GND
2	Input
3	GND
4	Case GND
5	Output
6	Output GND
7	GND
8	Case GND

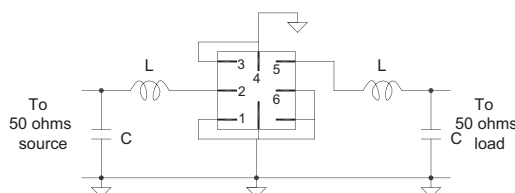
## OUTLINE DRAWING:



## FREQUENCY RESPONSE:



## TEST CIRCUIT:



Please refer to ABRACON's Chip Inductor Series AISC-0603 for the L's.